



and the Elements of Art

Looking at the way shapes, colors
and lines can create illusions.

The way shapes line up
with each other can give the
illusion of a new shape.

victor vasarely

One of the first artists to experiment with this idea is the Hungarian artist Victor Vasarely.

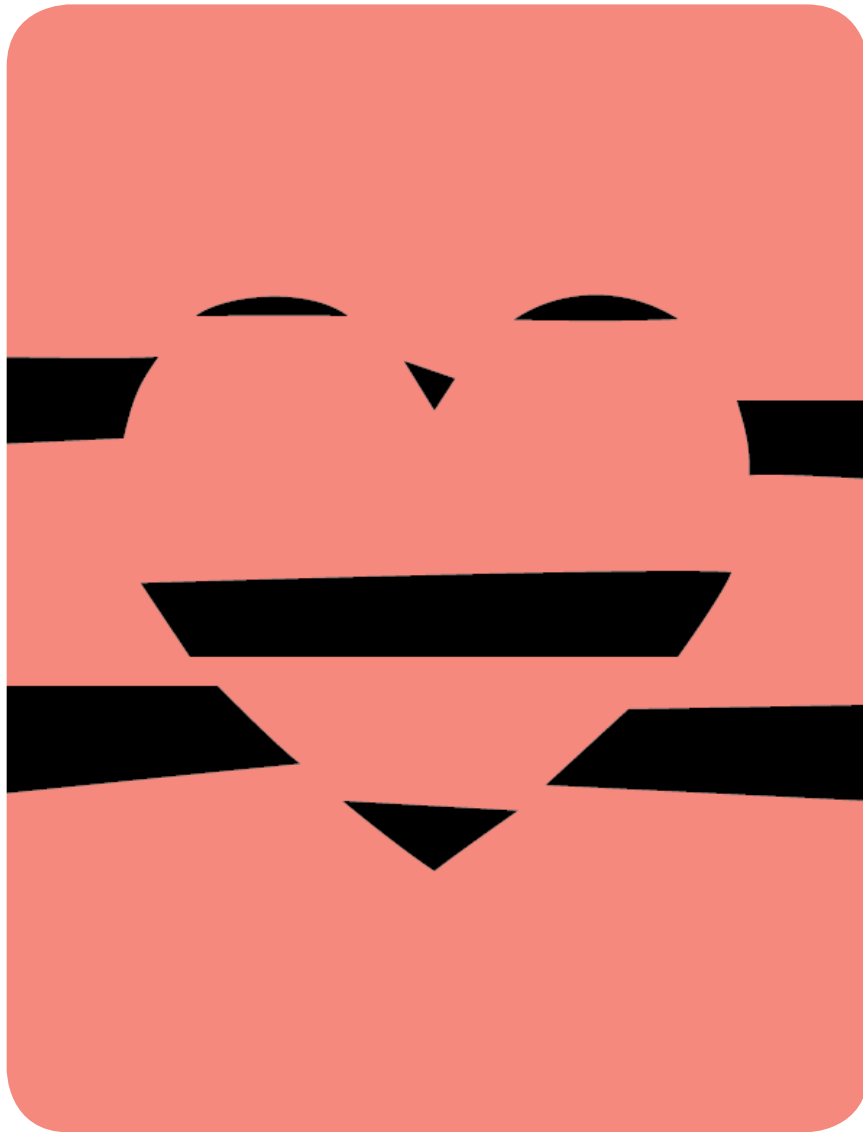
Click on the link to see a work of art by Victory Vasarely.
Can you see that the zebras are not created by line,
but by the way the shapes are arranged?



Op Art in Logos

Many companies like to use this type of optical illusion in their logos.

Can you find where an implied contour has been used to make a circle in the mock logo?



You can see a heart in the image on this page, but the heart is not drawn. This illusion is called an implied contour. It is a virtual heart.

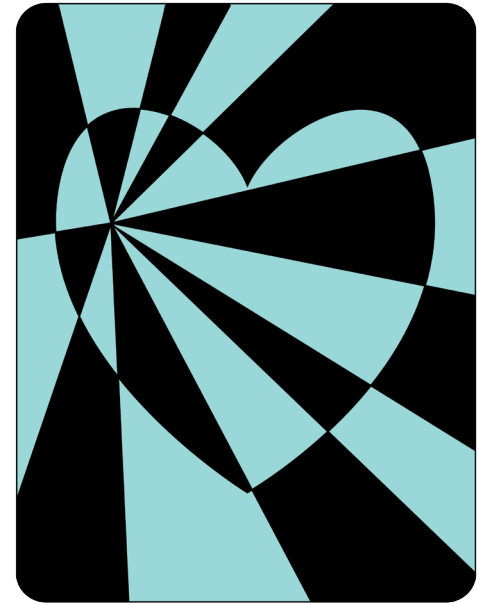
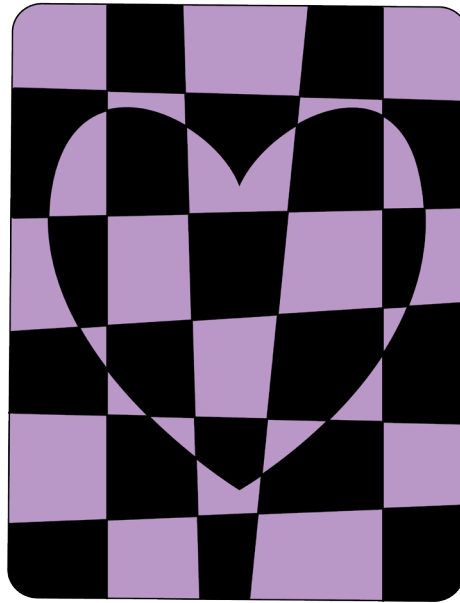
This illusion uses parts of the negative and positive heart shapes.



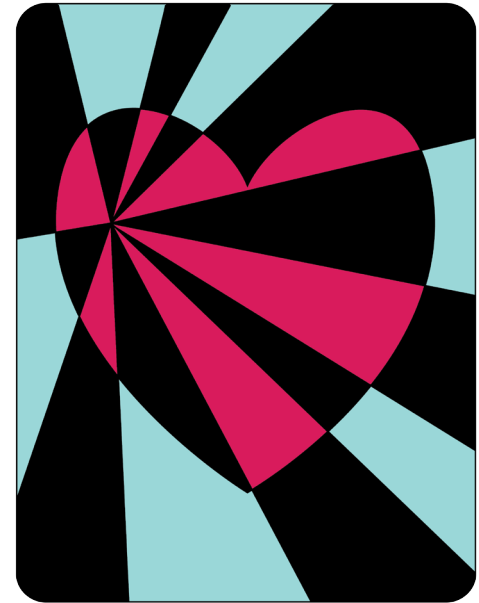
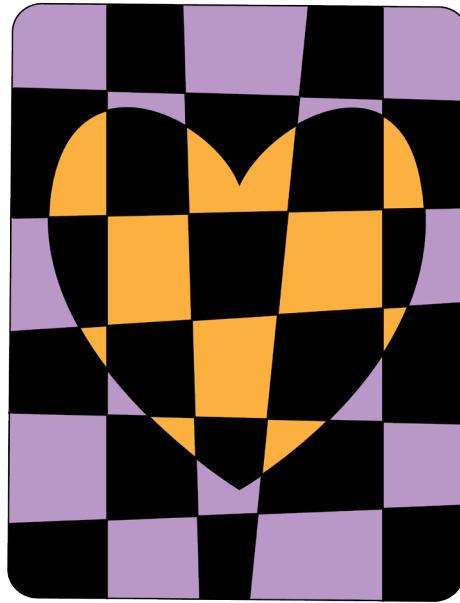
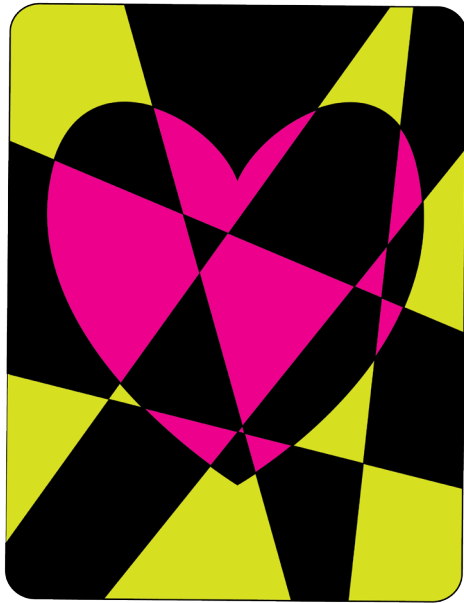
Negative



Positive

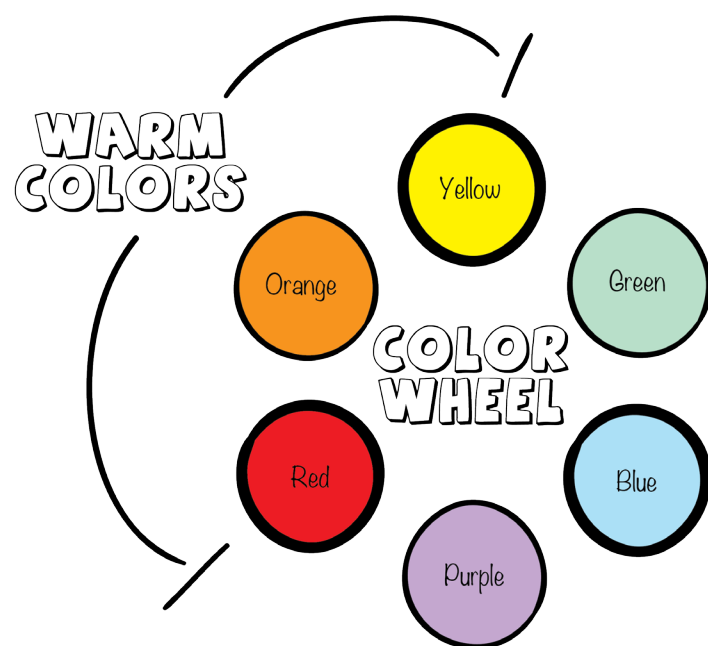


The implied contour of a hearts
can be seen in these designs.



What happens when warm colors are used on the hearts and cool colors are used in the background?

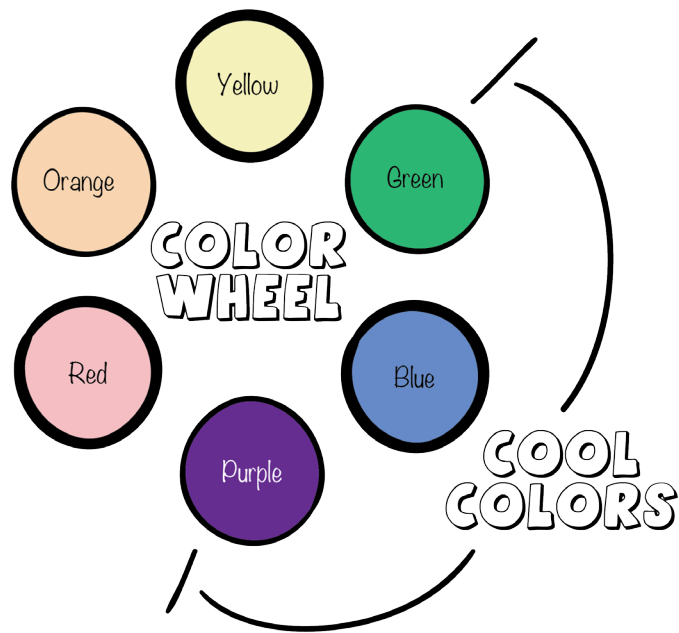
Warm Colors



Red, Yellow and Orange (along with tints and shades, like brown). They remind us of fire or of summer.

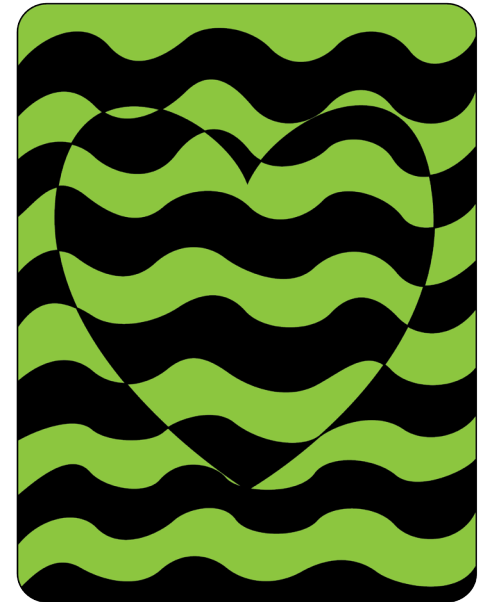
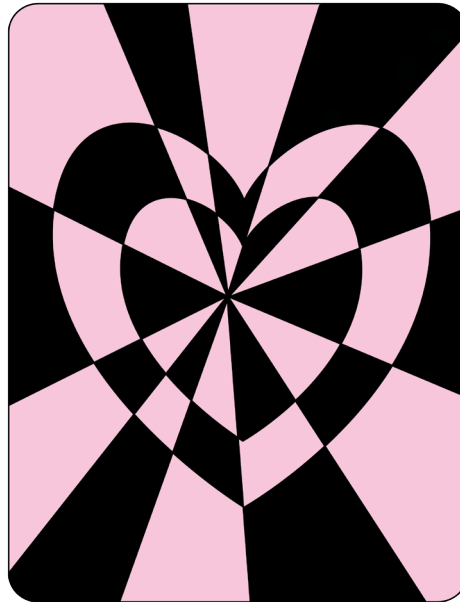
Warm colors can appear to move forward, closer to the viewer.

Cool Colors



Blue, Purple and Green. They remind us of a cool shady spot, or of winter.

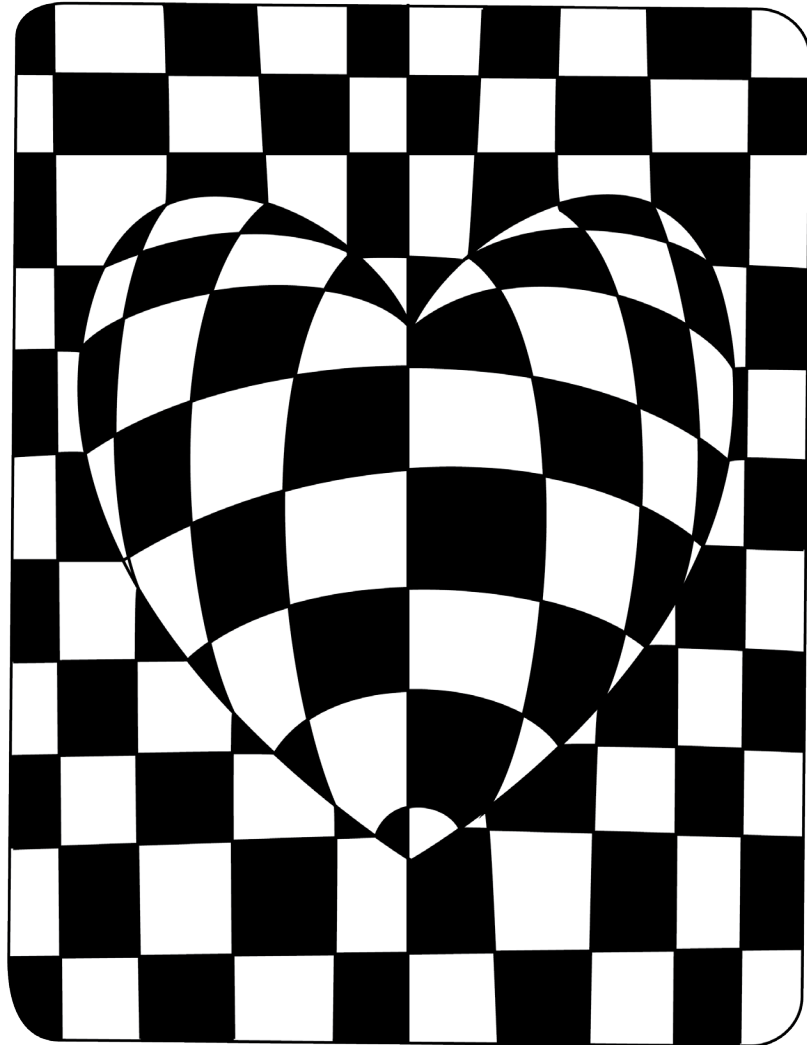
Cool colors can appear to recede, or move away from the viewer.



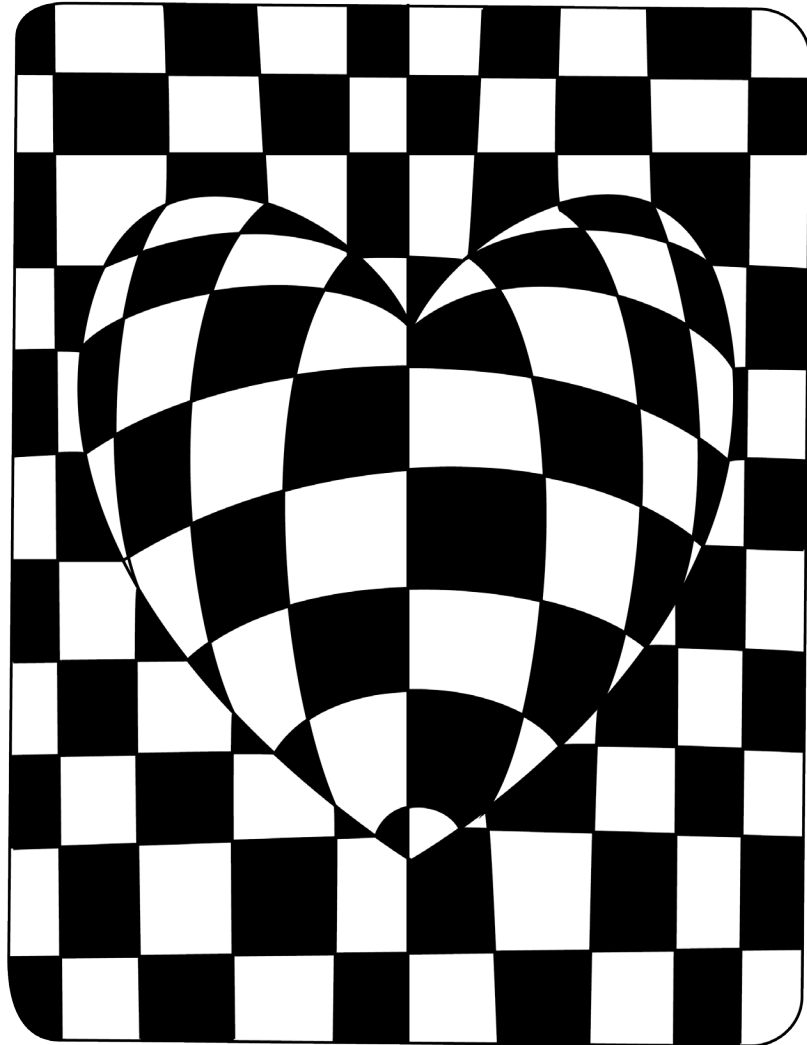
Here are some more designs with
illusory contours of hearts.
The center design has 2 hearts.



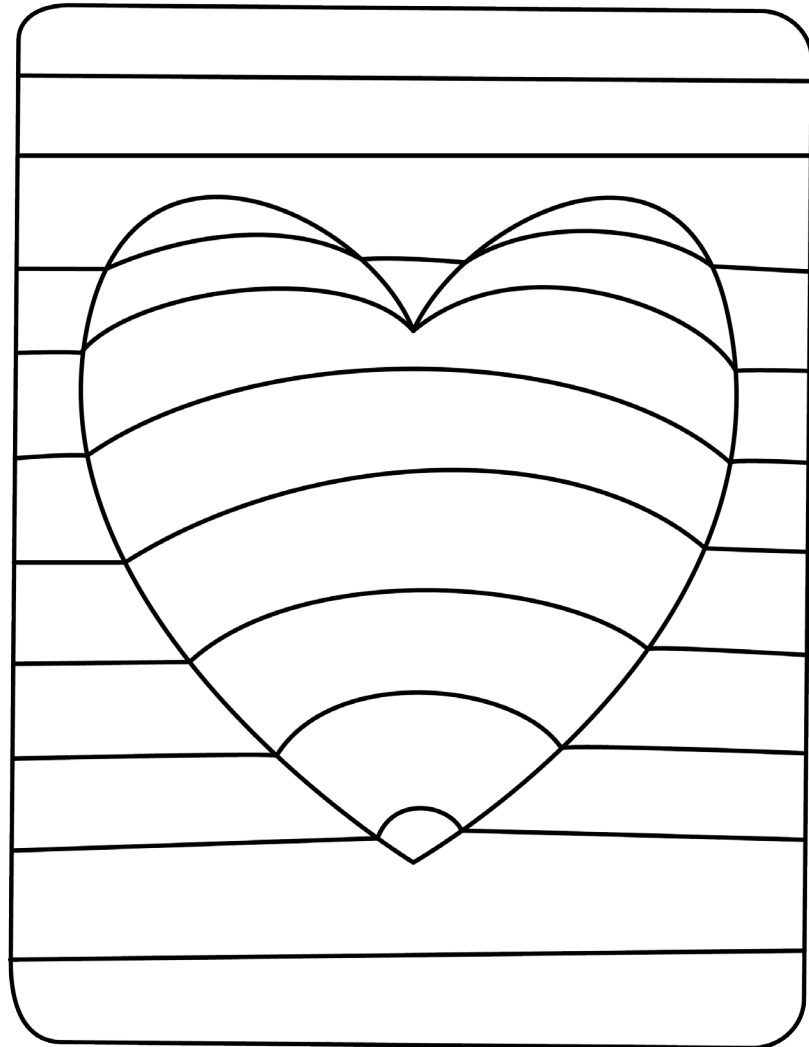
Can you see the heart appear to move forward when warm colors are used on the hearts and cool colors are used in the background?



This heart adds one more illusion to the mix. It has an implied contour. But is also looks 3D because of the curved lines on the heart.

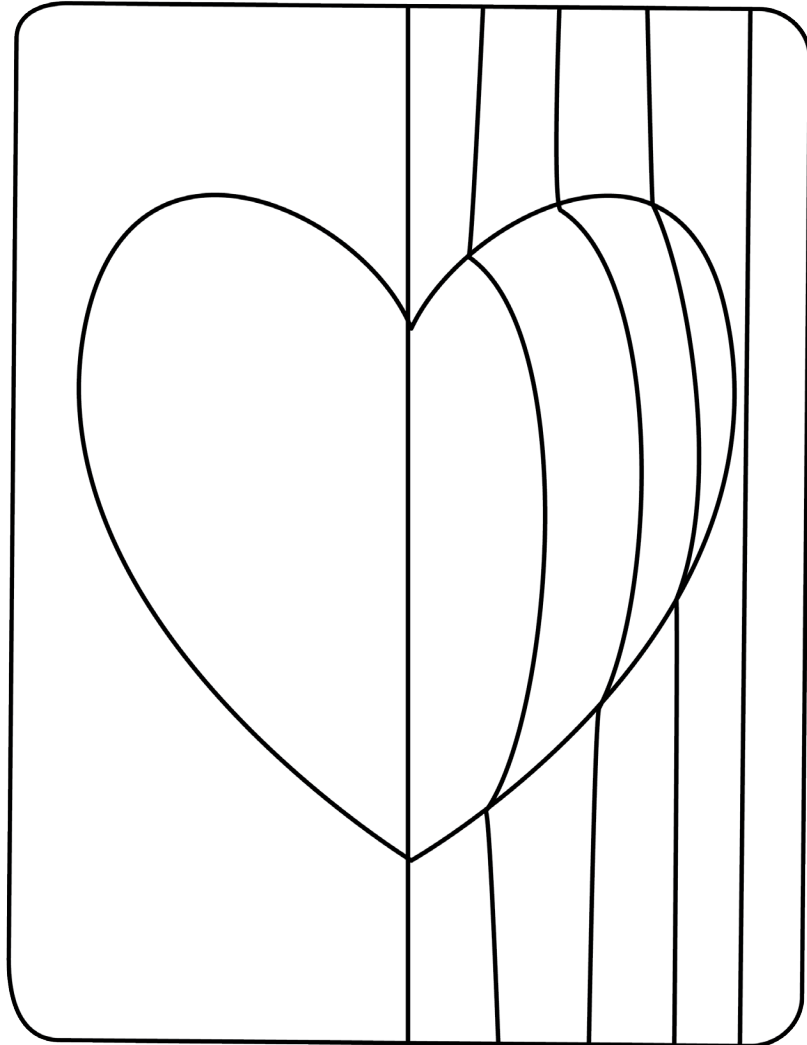


Let's take a
step-by-step look at
what is making this
illusion.

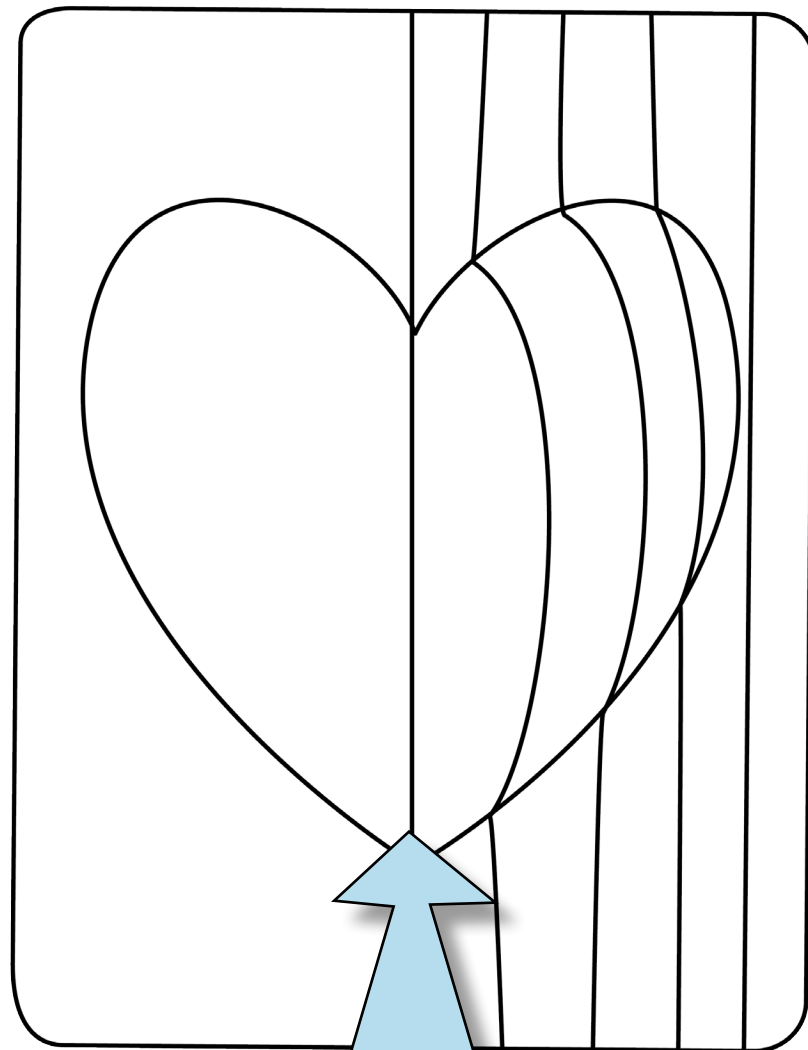


The horizontal lines
are curving up inside
the heart.

This makes it look like
the heart is bulging
towards us and that
we are viewing the
heart from below.

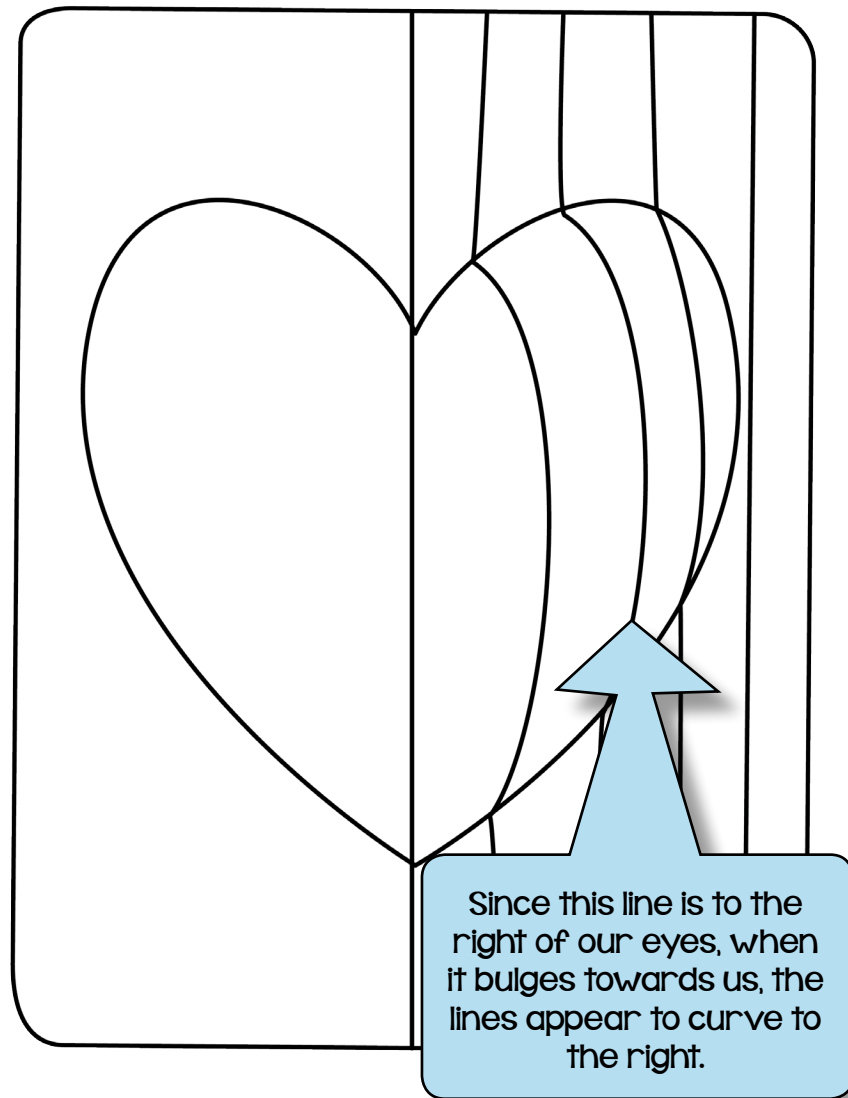


The curved vertical lines, right of the center line, make it look like the heart is bulging towards us and that our eyes are lined up with the center line.

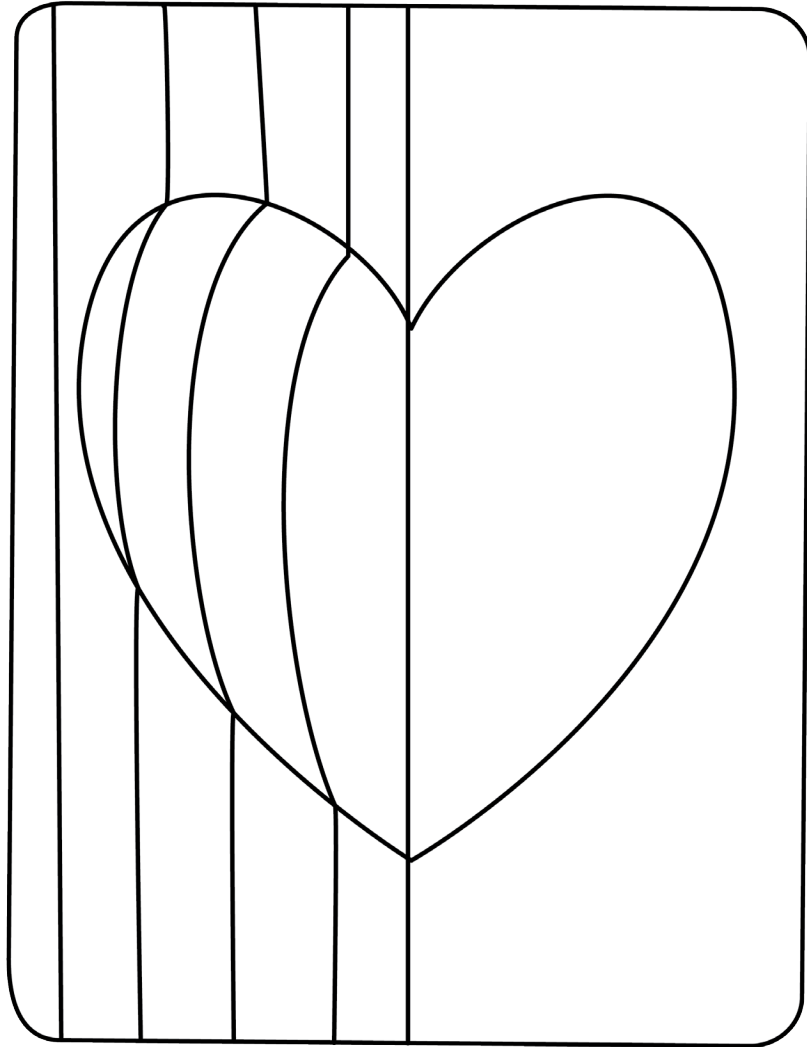


Since this line is bulging straight towards us, it appears to be straight, not curved.

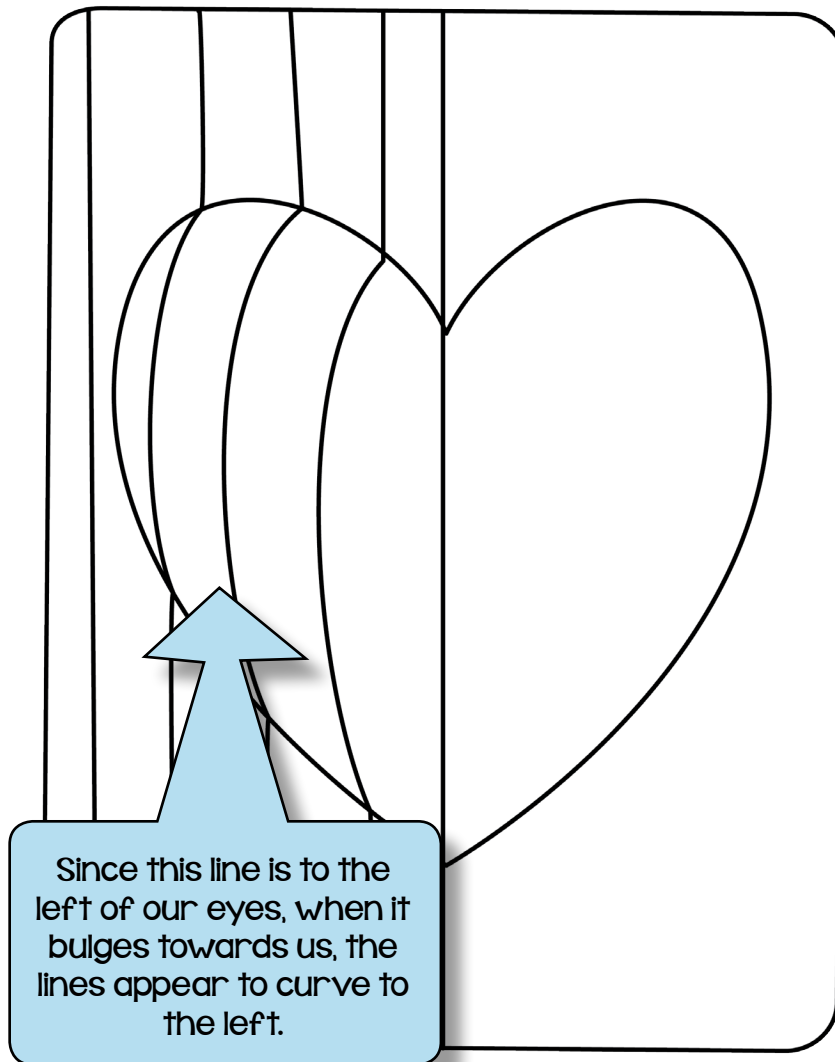
The curved vertical lines, right of the center line, make it look like the heart is bulging towards us and that our eyes are lined up with the center line.



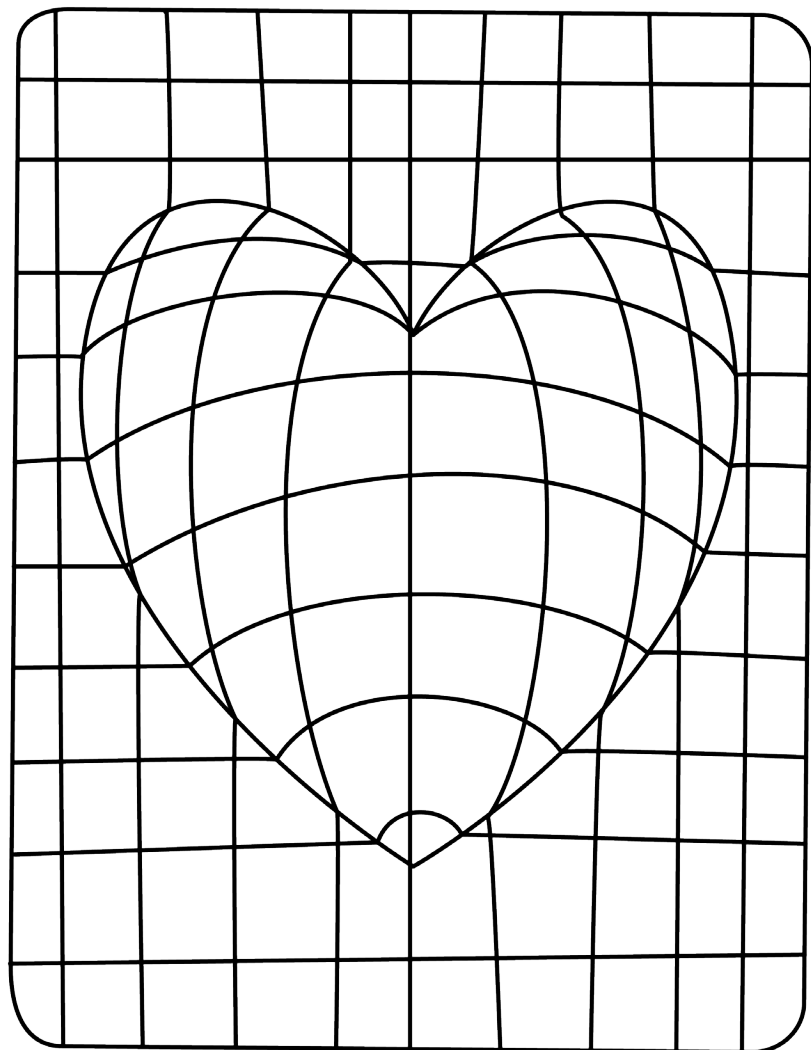
The curved vertical lines, right of the center line, make it look like the heart is bulging towards us and that our eyes are lined up with the center line.



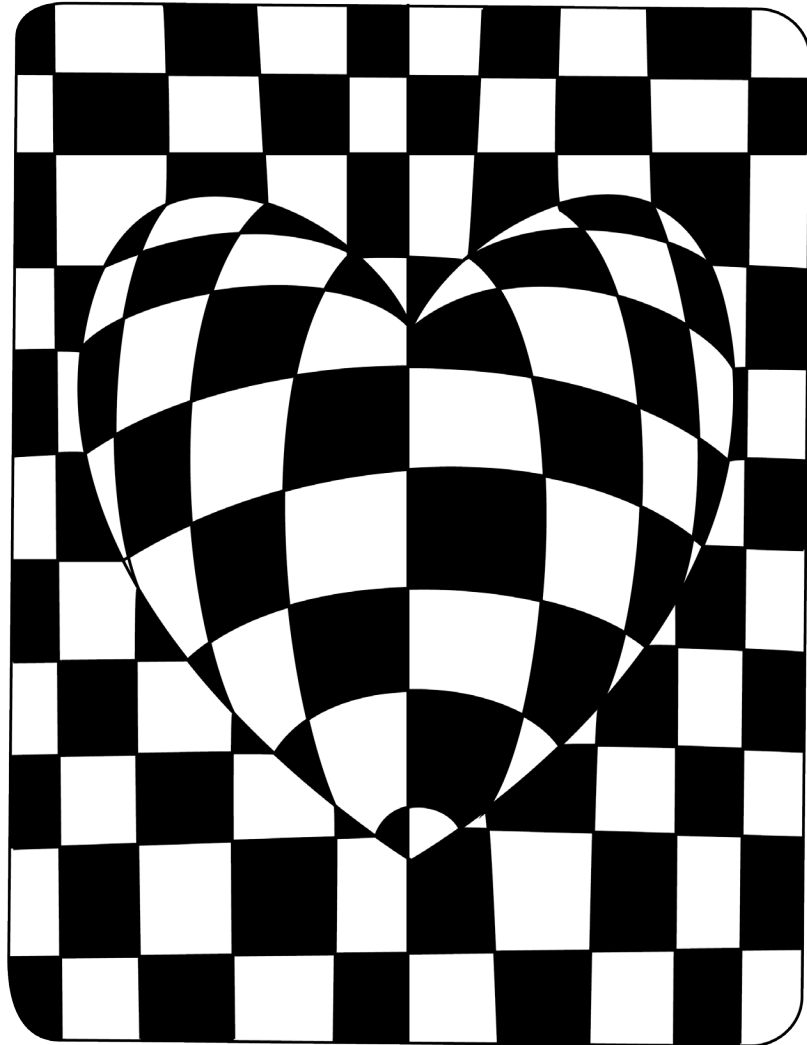
The curved vertical lines, left of the center line, make it look like the heart is bulging towards us and that our eyes are lined up with the center line.



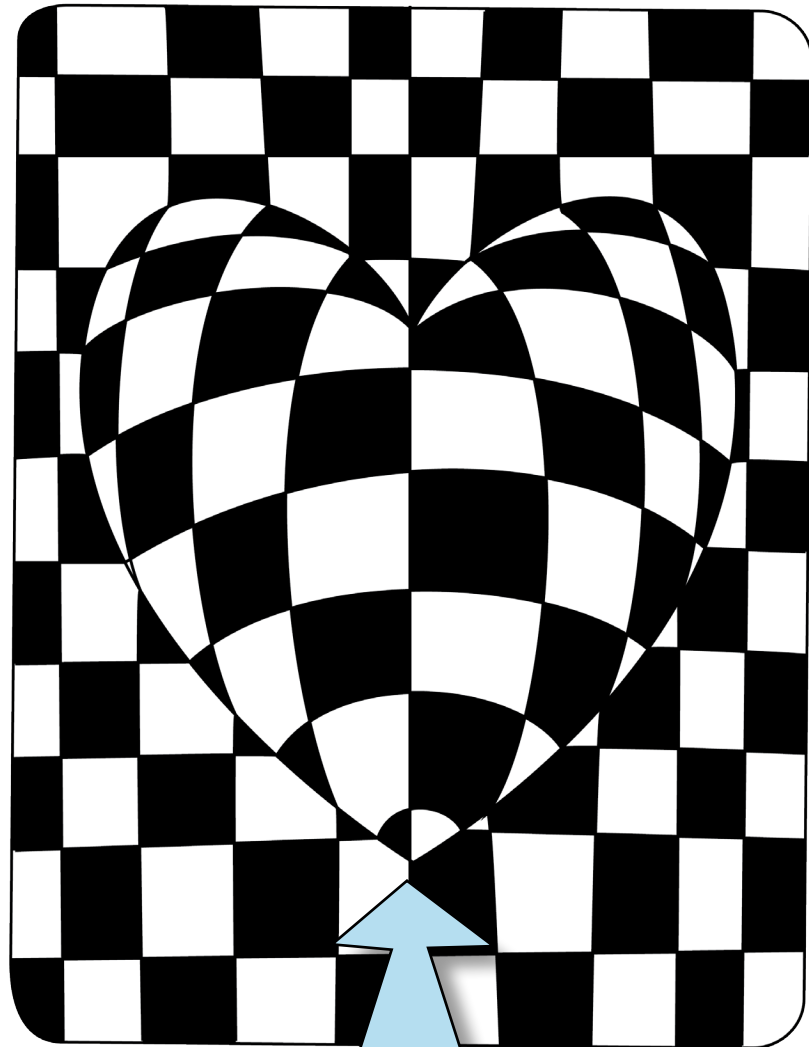
The curved vertical lines, left of the center line, make it look like the heart is bulging towards us and that our eyes are lined up with the center line.



Put the lines all
together and they
look like this.

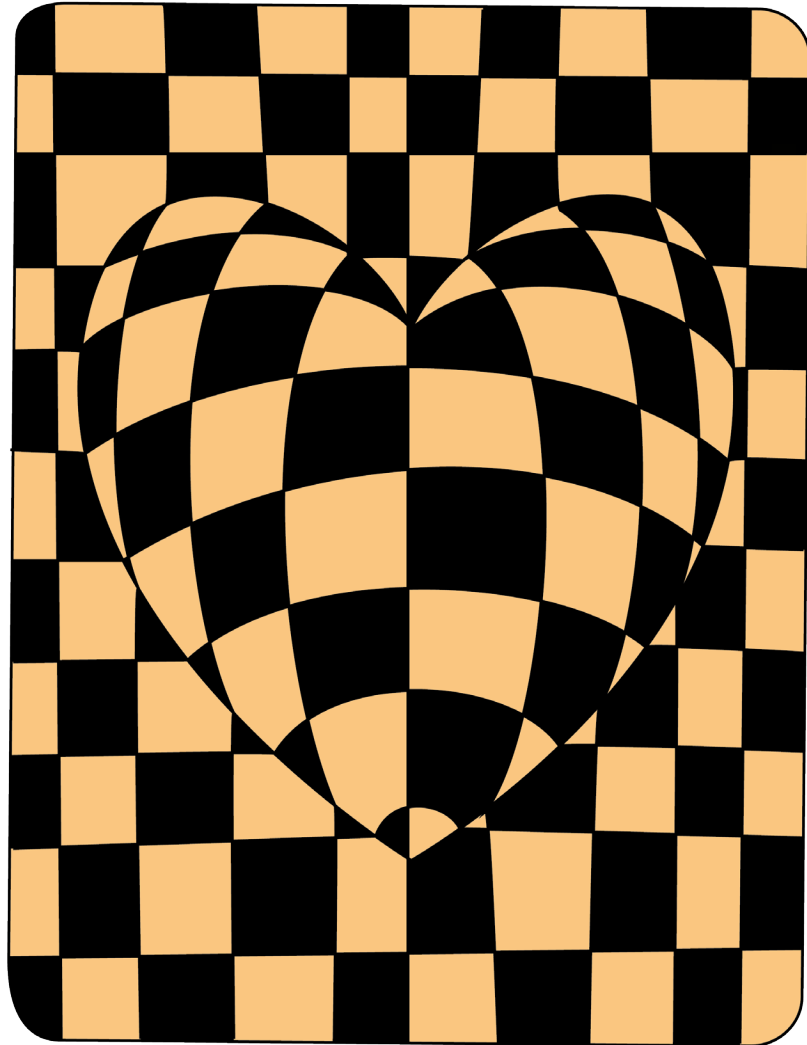


Add a black
checkered pattern
and it creates an
implied outline of the
heart. But what is
different about the
pattern inside the
heart?

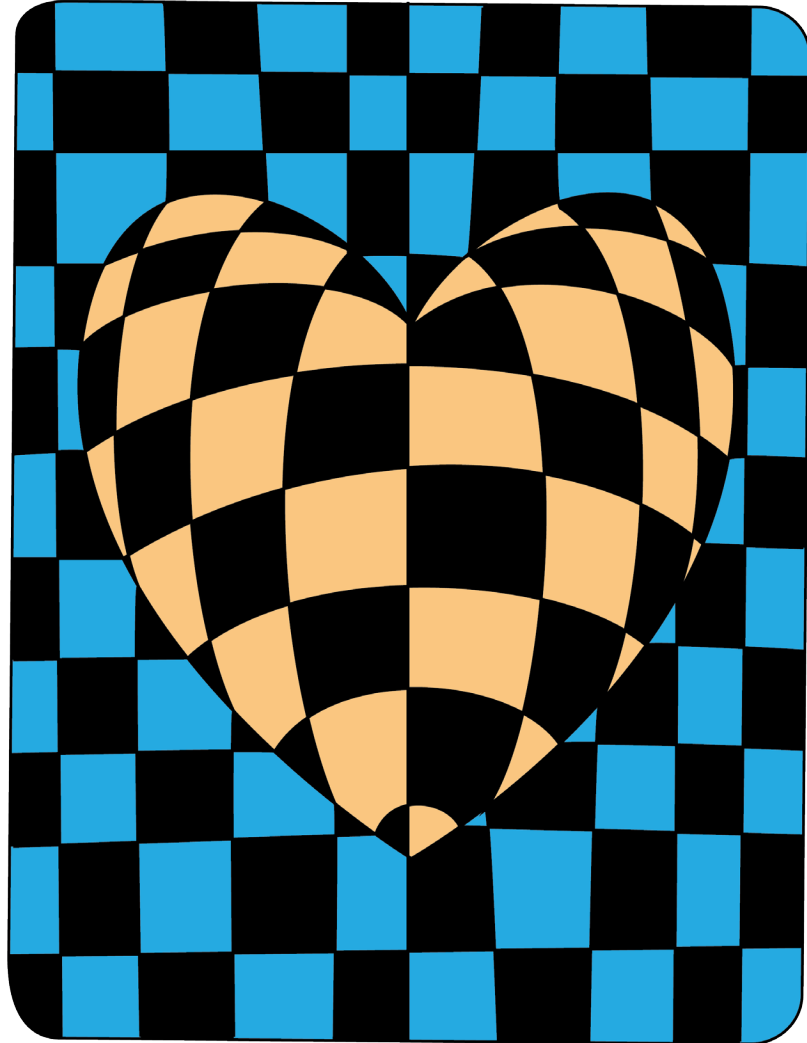


Add a black checkered pattern and it creates an implied outline of the heart. But what is different about the pattern inside the heart?

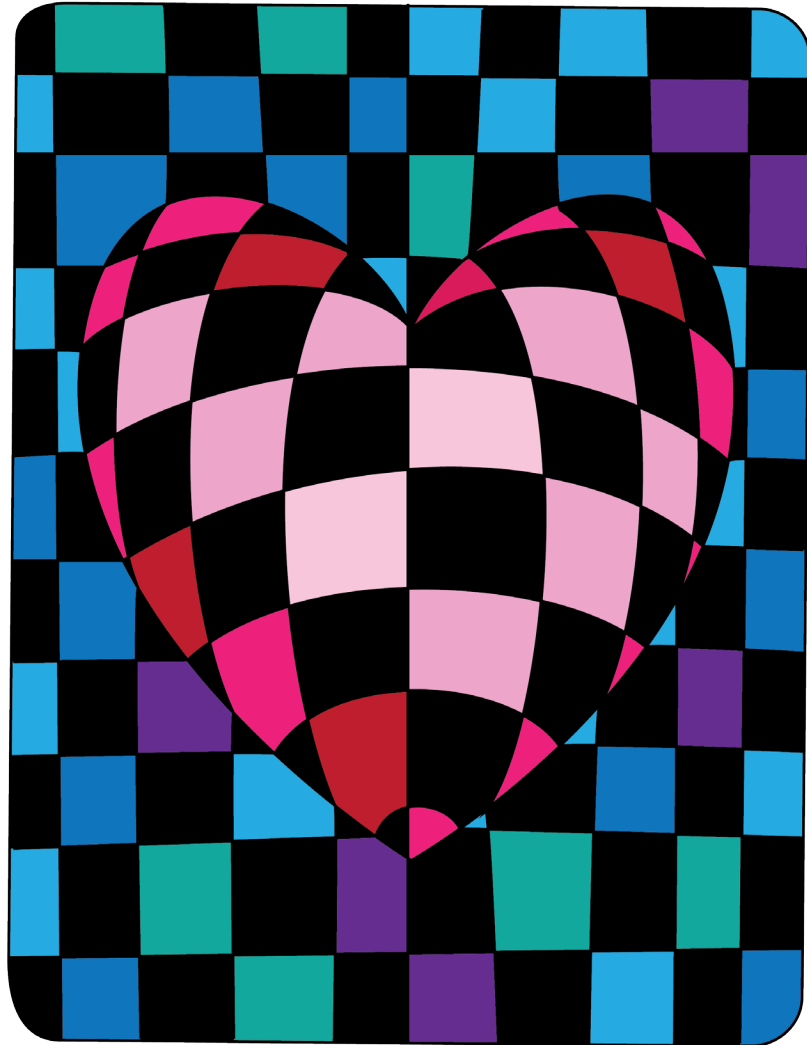
Can you see that the heart has the black and white areas reversed for each square?



What do you think
will happen when a
cool color is added in
the background of
this heart design?

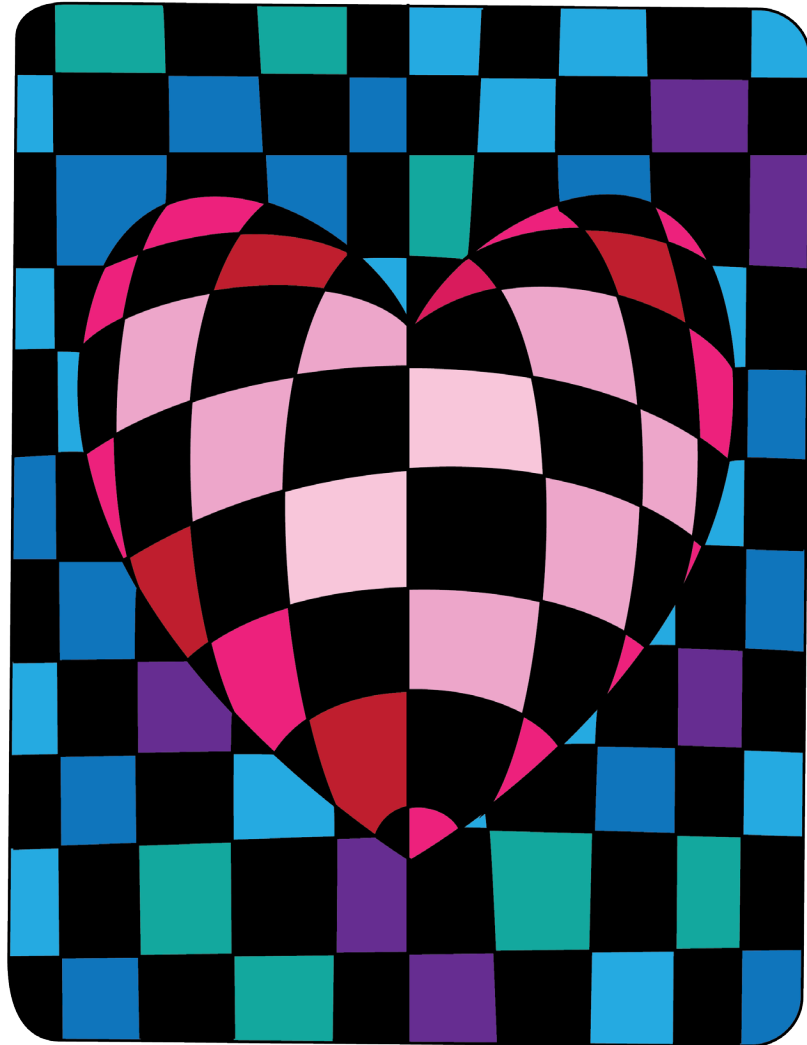


Were you right?



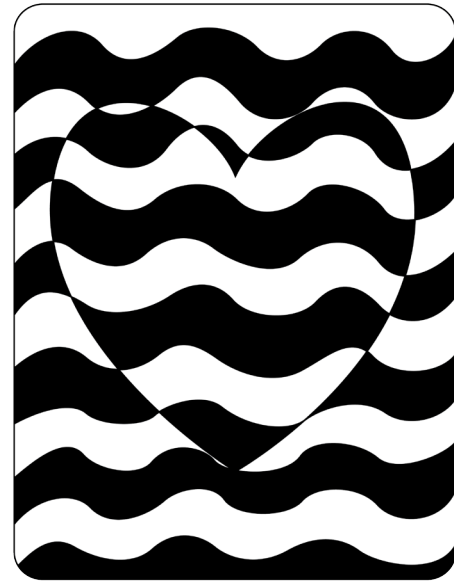
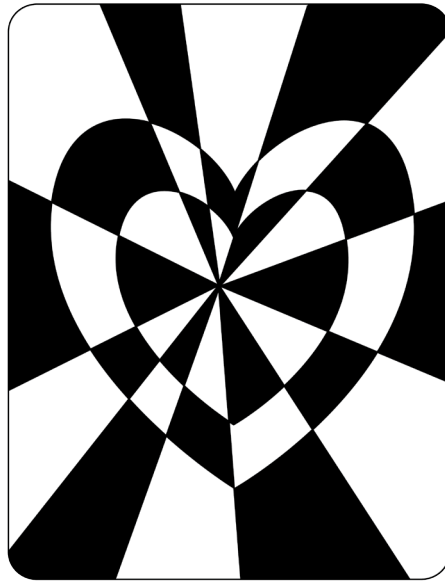
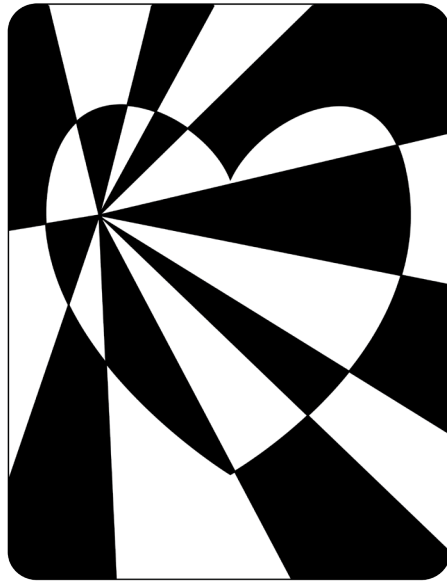
Just for fun, this heart has a variety of warm and cool colors.

Can you find where the value of the colors is the lightest?

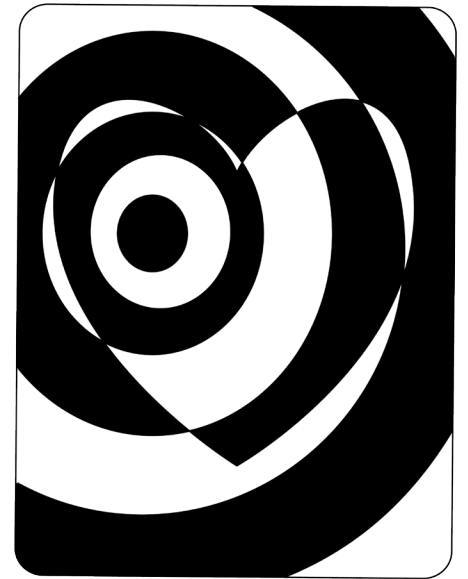
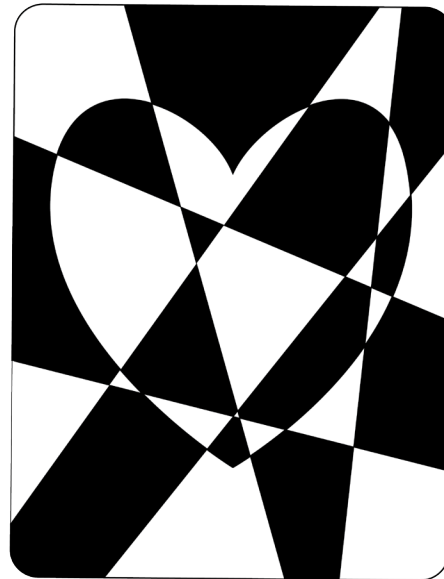
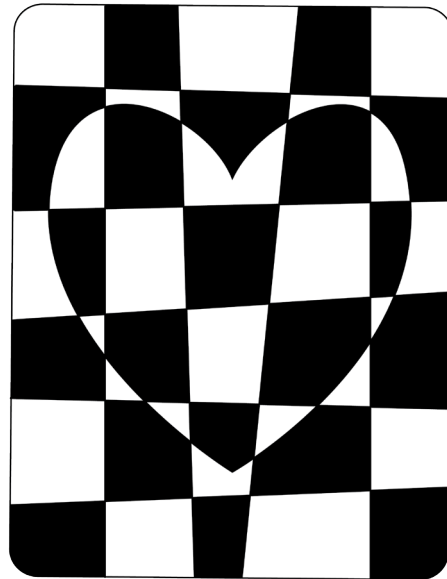
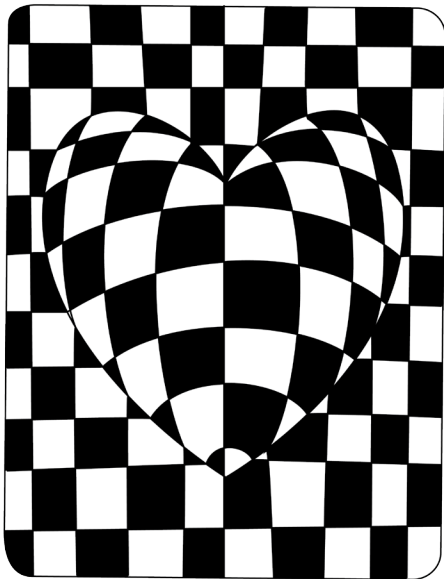


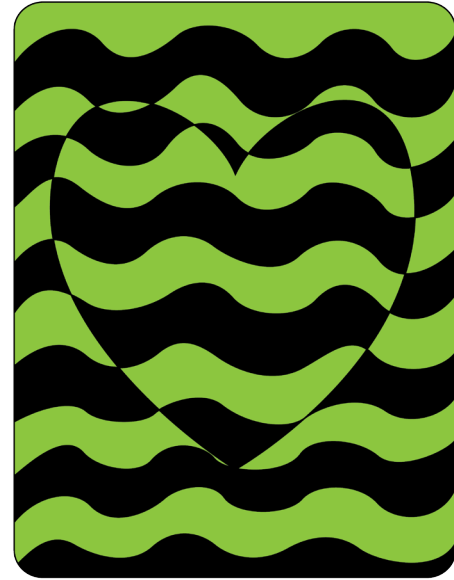
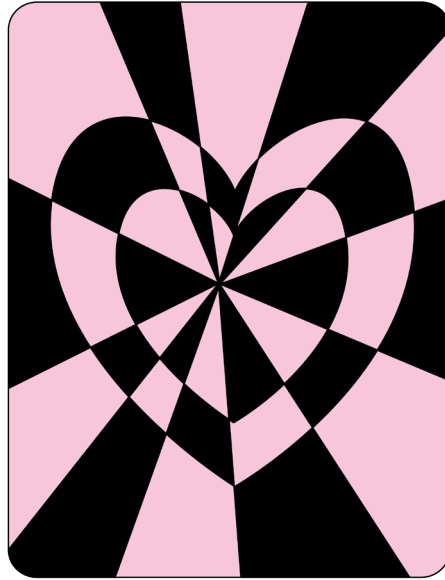
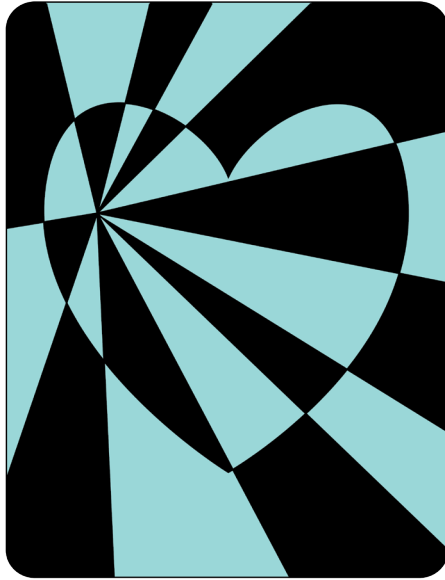
Where is the value of the colors the darkest?

How does using light and dark values help the design look more 3D?

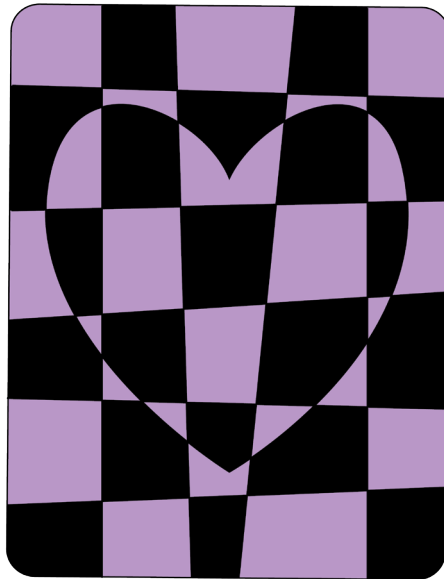
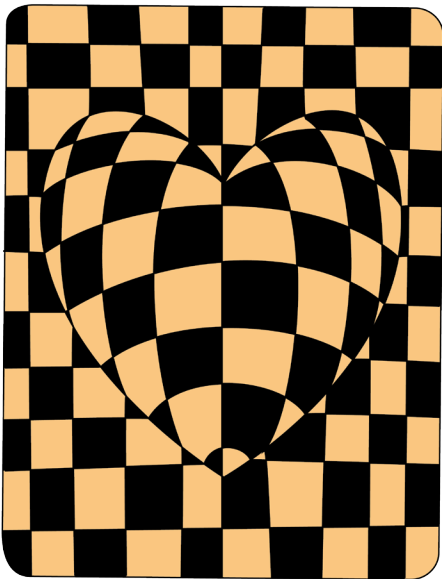


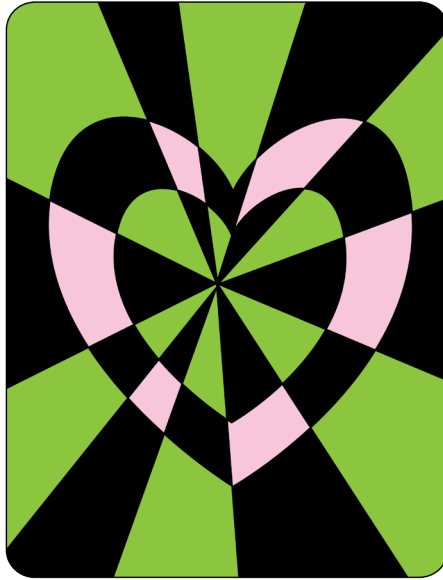
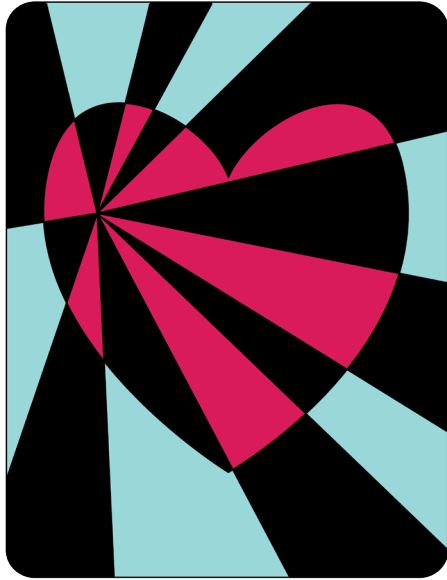
Which design will you try?



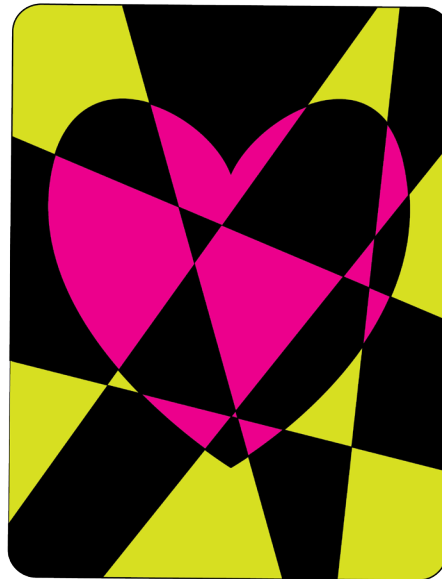
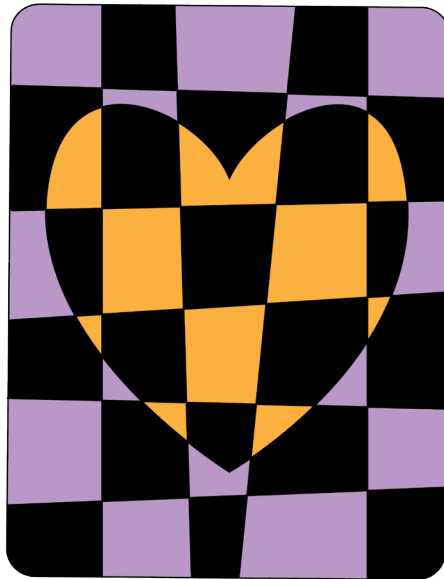
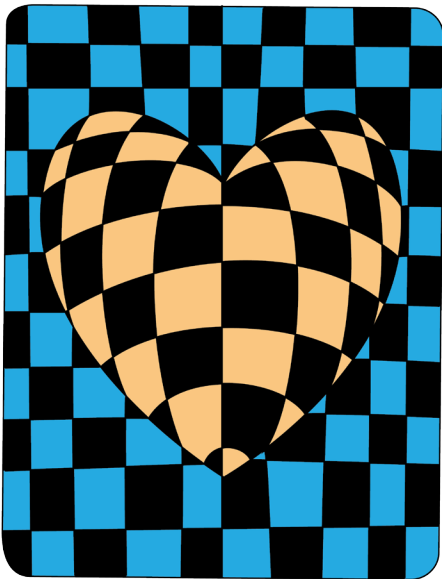


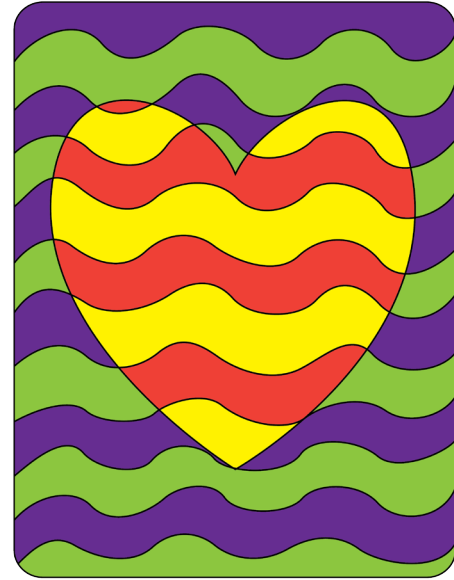
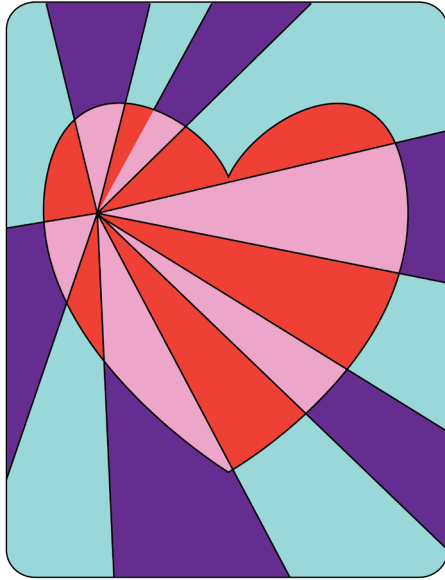
What kind of colors will you use?



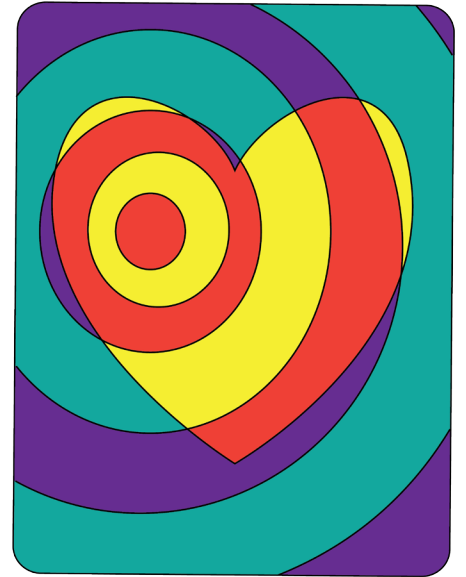
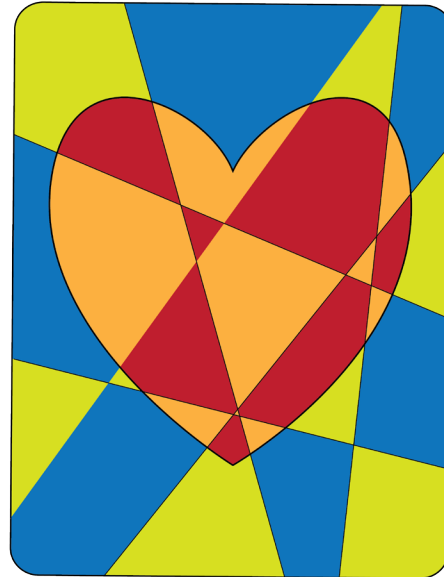
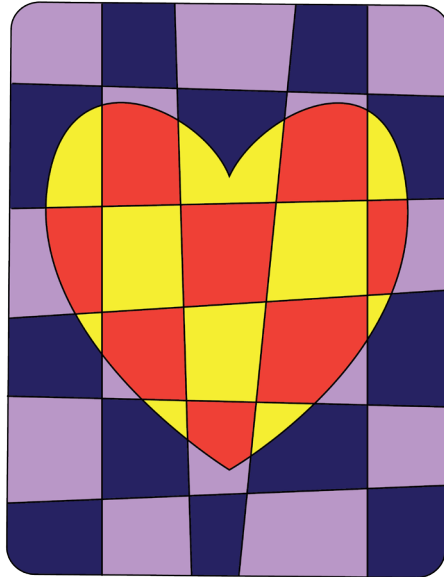
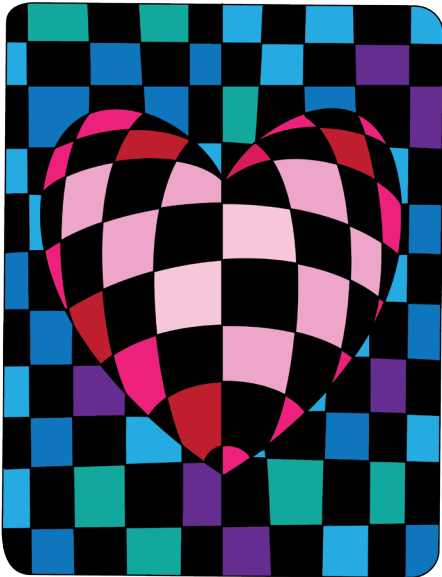


What kind of colors will you use?





What kind of colors will you use?



CREDITS

Lesson and artwork by Stacey Peters for
EXPRESSIVE MONKEY

<http://www.teacherspayteachers.com/Store/Expressive-Monkey>

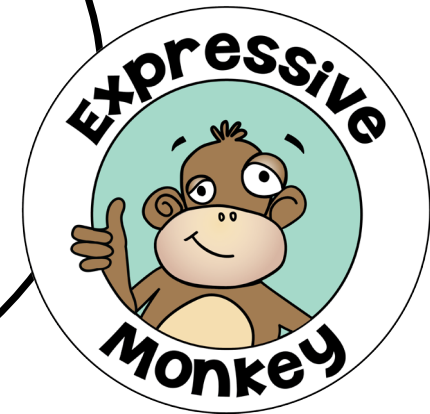
Also check out

www.expressivemonkey.com

AGENTS
ORANGE by www.1001freefonts.com

Second Chances and
Behind Those Hazel Eyes
by KG Fonts

<http://www.teacherspayteachers.com/Store/Kimberly-Geswein-Fonts>



SHARING IS AWESOME! HOWEVER...

For more lesson ideas, click
on the button to visit the



Support the creation of more great lessons like this by sharing the TPT links,
not the actual document with your friends.

Additional licenses are available for purchase (at a reduced rate)
for the purpose of sharing lessons with friends.

Permission is granted for one person's use in a classroom or home setting.
Distributing this work by any means is prohibited.